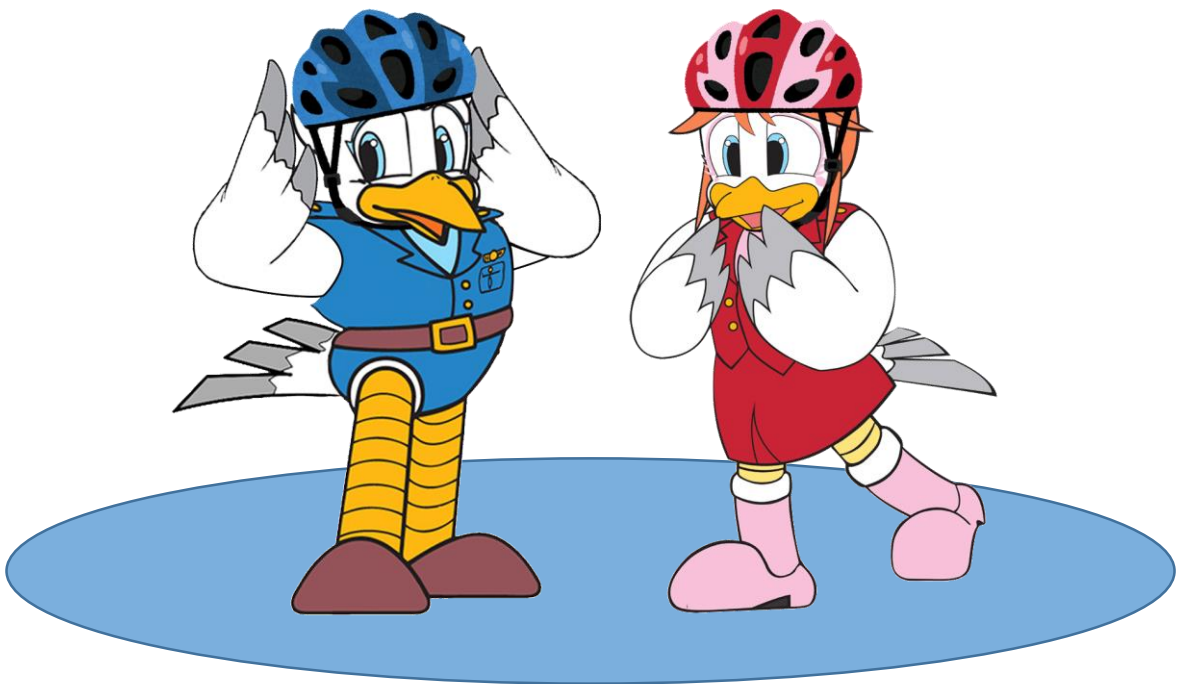


Bicycle Traffic Safety



Hyogo Prefectural Police HQ

Make Sure to Check Your Bicycle Before Riding

A bicycle with no brakes or under-inflated tires is very dangerous.

Always check your bicycle before riding.

Does the brake work properly?

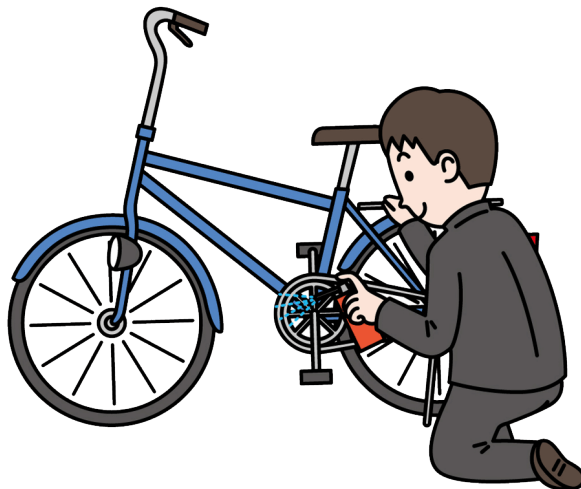
Do the tires have enough grip?

Is the handlebar attached properly?

Bicycle Frame Check

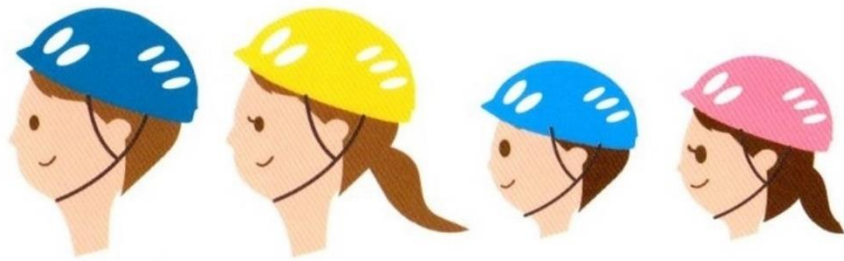
- Is the bicycle properly set up for your physique?
- Is the light working?
- Are reflectors firmly attached?

Is the bell working properly?



Cyclists Should Wear a Helmet

To avoid serious injury,
wear a bicycle helmet
while riding a bicycle!



How to Ride a Bicycle Properly

The common keyword is
“LEFT”

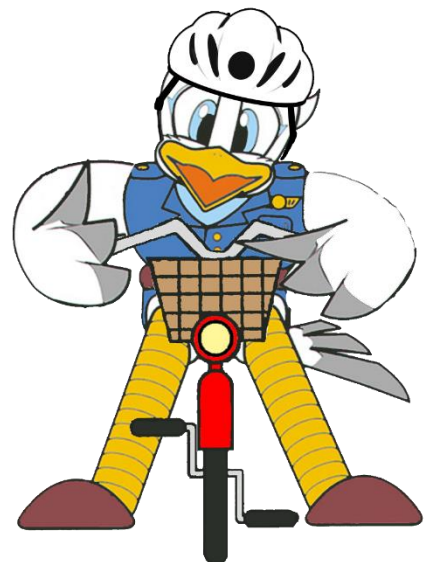
Always get on your bicycle from the LEFT

Always ride on the LEFT side of the road

Always use the LEFT brake first

Always put your LEFT foot on ground and
right foot on pedal when stopping.

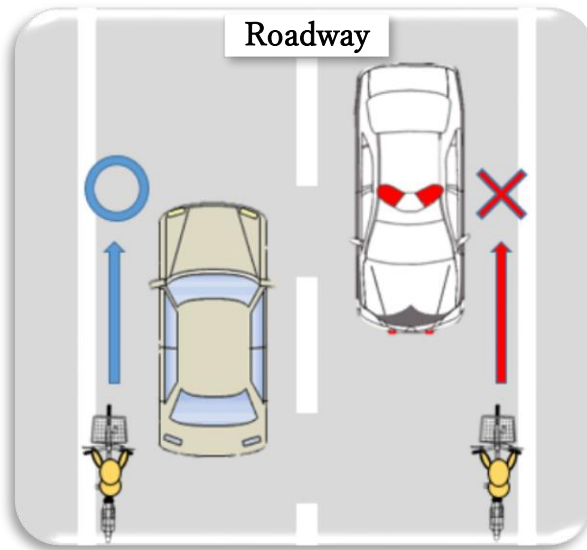
Always get off your bicycle from the LEFT



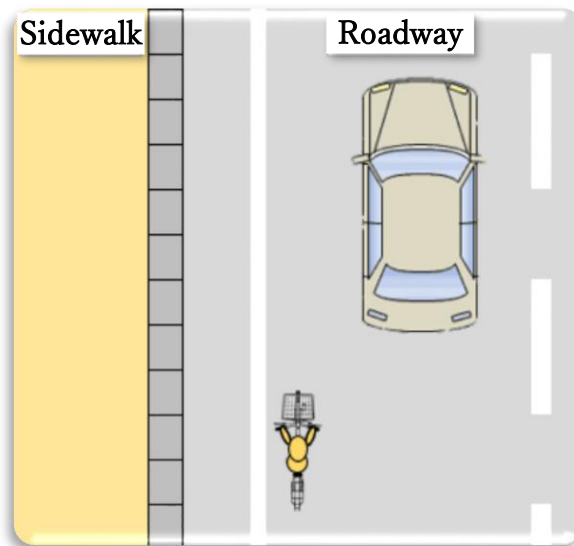
Use the Cycling Path

Bicycles are classified as vehicles.

Cyclists should ride on the left side of the road.

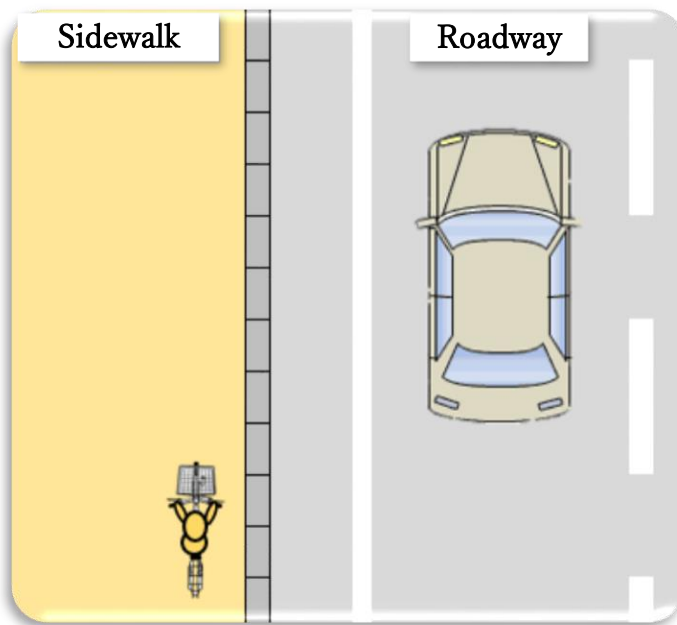


Cyclists should keep to the left edge of the road.

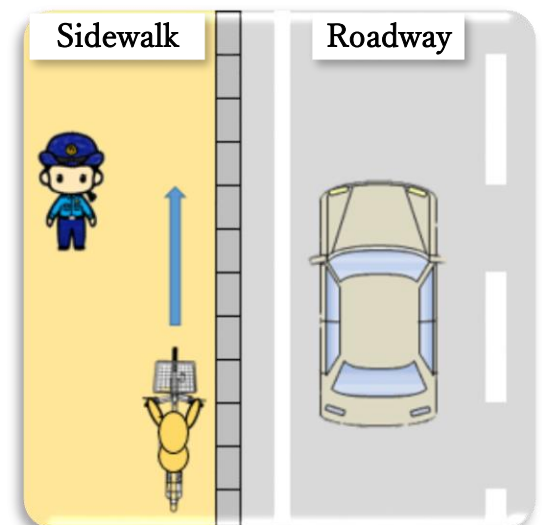


Use the Cycling Path

Children under 13 are allowed to ride a bicycle on the sidewalk.

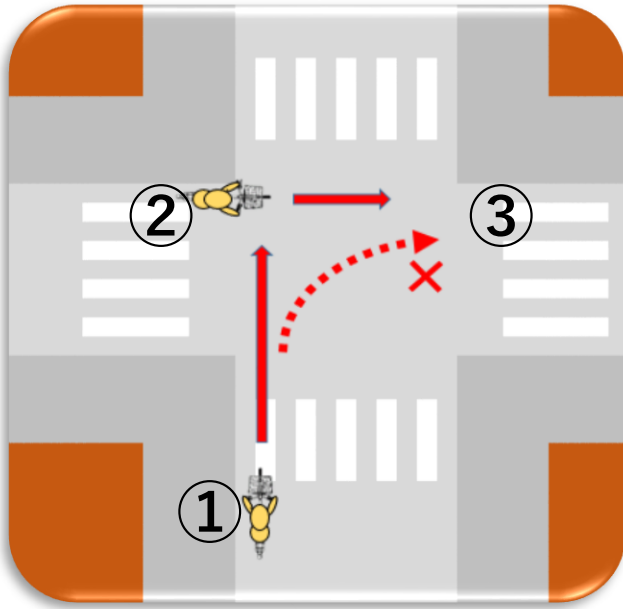


Cyclists should pass slowly on the sidewalk, staying to the side of the road.



Using Intersections

At intersections without traffic lights



Pull to the left side of the road,

Cross the intersection in a straight direction from ① to ② and then to ③

At intersections with traffic lights



Pull to the left side of the road at ①

Cross the intersection in a straight direction when the light at ② turns green and facing right.

Proceed in a straight direction when the light at ③ turns green.

Cyclists Must Obey the Rules

- ① Riding double is prohibited.



- ② Riding side by side is prohibited.



Cyclists Must Obey the Rules

- ③ Cyclists must use bicycle lights at night.



- ④ Cyclists must obey traffic lights.



Cyclists Must Obey the Rules

- ⑤ Cyclists should come to a full stop, look both ways, and check for safety at the corner.

Cyclists must come to a full stop at stop signs.



- ⑥ Cyclists must not use umbrellas or smartphones while riding a bicycle.



If You Are Involved in a Traffic Accident



Ask a nearby person for help.

Call an ambulance or report the incident to the police.

Call your mom and dad or ask someone to contact them.